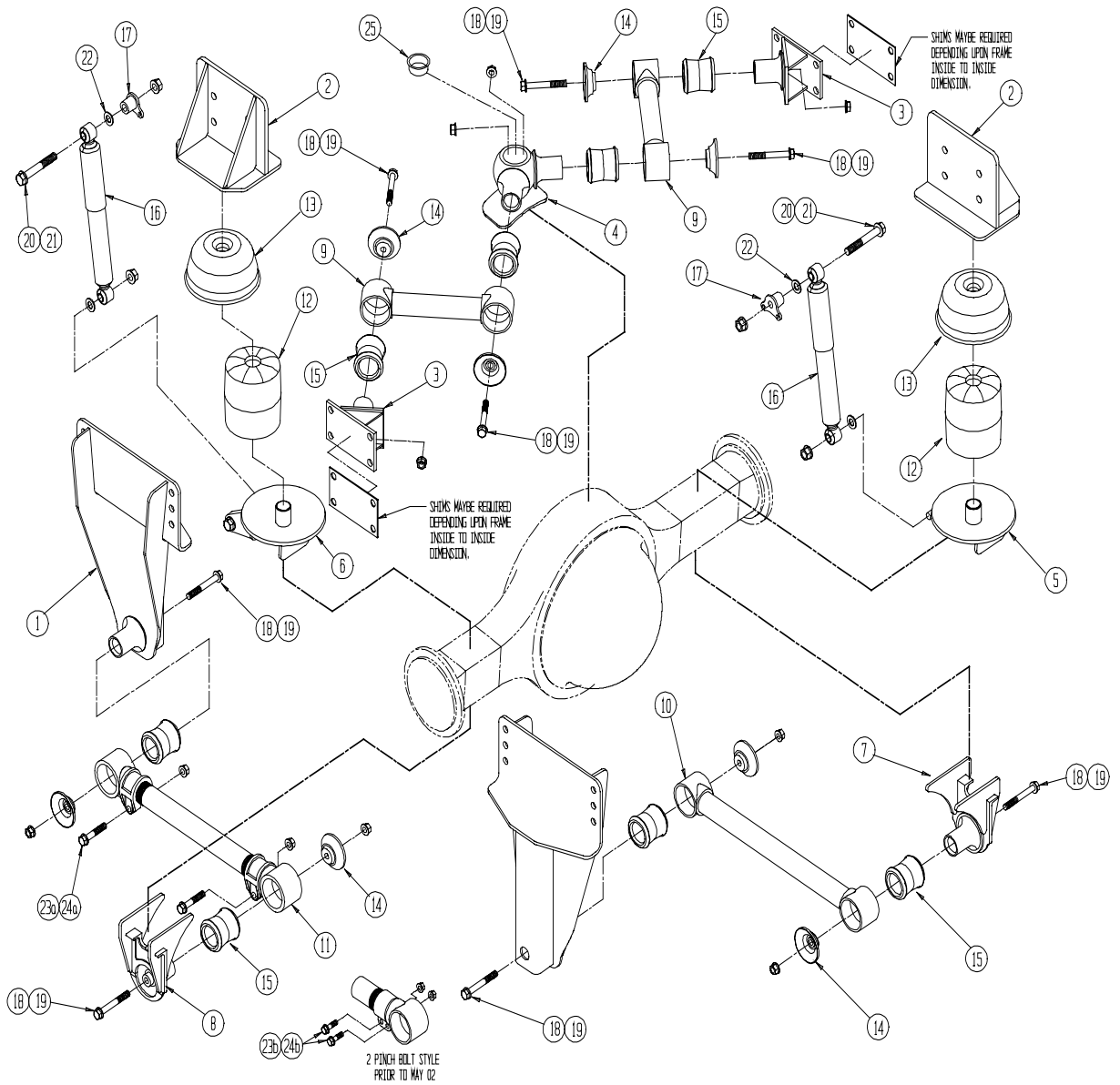




# **1023 SERIES 23K PARTS MANUAL**

CHALMERS SUSPENSIONS INTERNATIONAL INC  
6400 NORTHAM DRIVE  
MISSISSAUGA, ONTARIO, CANADA  
L4V 1J1  
(905) 362-6400 PHONE (905) 362-6401 FAX



Chalmers Suspensions 1000 Series 23,000 lbs. Single Axle Truck Suspension

CHALMERS 1023 SERIES SUSPENSION  
23,000 LBS PARTS LISTING

ITEM NO.	PART NO.	DESCRIPTION	QTY	COMMENTS
1	481655	HANGER ASSEMBLY	2	BLANK
2	481666	UPPER SPRING PLATE	2	
3	481679	UPPER FRAME BRACKET	2	
4	SEE TABLE	TOWER	1	
5	SEE TABLE	CONICAL SPRING PLATE RH	1	
6	SEE TABLE	CONICAL SPRING PLATE LH	1	
7	SEE TABLE	TORQUE ROD AXLE BRKT RH	1	
8	SEE TABLE	TORQUE ROD AXLE BRKT LH	1	
9	223150	UPPER TORQUE ROD	2	15.0" LONG
10	223290	LOWER TORQUE ROD	1	29.0" LONG
	223210	LOWER TORQUE ROD (optional)	1	21.0" LONG
11	216290	LOWER TORQUE ROD	1	29.0" LONG, ADJ.
	216210	LOWER TORQUE ROD (optional)	1	21.0" LOND, ADJ.
12	15010	#10 LOADGUARD SPRING	2	
	15009	# 9 LOADGUARD SPRING (opt)	2	REDUCED HEIGHT
13	373010	#10 RESTRICTOR CAN	2	
14	800201	SPIGOT CAP #1 JOINT	8	
15	22128	BUSHING #1 JOINT	8	STANDARD
	22129	BUSHING #1 JOINT	8	OVERSIZED/SERVICE
16	665174	SHOCK ABSORBER/STOP	2	
17	800154	UPPER SHOCK BRACKET	2	
18	HDW 381	5/8" NC X 5.0" LG BOLT	8	
19	HDW 379	5/8" NC LOCKNUT	8	
20	HDW 372	3/4" NC X 5.5" LG BOLT	2	
21	HDW 018	3/4" NC LOCKNUT	4	
22	HDW 031	3/4" ID X 1/8" THK WASHER	16	
23a	HDW 380	5/8" NC X 3.5" LG BOLT	4	SUPPLIED WITH T/ROD
24a	HDW 379	5/8" NC LOCKNUT	4	SUPPLIED WITH T/ROD
23b	HDW 397	1/2" NC X 1.75" LG BOLT	8	SUPPLIED WITH T/ROD
24b	HDW 393	1/2" NC LOCKNUT	8	SUPPLIED WITH T/ROD
25	98P00014	TOWER PLUG	1	

Notes:

a – Single pinch bolt style torque rod end put into production May/02

b – Double pinch bolt style torque rod end used prior to May/02

## CHALMERS 1023 SERIES TOWERS 23,000 LBS CAPACITY

TOWER	AXLE MODEL
<b>481547</b>	MERITOR(ROCKWELL); RS 24-160 SPICER; J220S, S190S, W230S
<b>481549</b>	MERITOR(ROCKWELL); RS 23-180
<b>481552</b>	DANA(EATON); 21060 T/P, 23080 MERITOR(ROCKWELL); RS 21-160, RS 21-230, RS 23-160 RS 23-240 SPICER; M230T
<b>481553</b>	DANA(EATON); S25-170
<b>481554</b>	DANA(EATON); 21060 S/D/A, 23082, S23-190 MERITOR(ROCKWELL); RS 19-145, RS 21-145
<b>03S00587</b>	DANA(EATON); 23090S

## CHALMERS 1023 SERIES CONICAL SPRING PLATES 23,000 LBS CAPACITY

### FORWARD MOUNTED SHOCK ABSORBERS

CONICAL RH	CONICAL LH	AXLE MODEL
<b>03S00044</b>	<b>03S00045</b>	DANA(EATON); 21060 S/D/A, 23082, 23090S, S23-190 MERITOR(ROCKWELL); RS 19-145, RS 21-145, RS 21-160 RS 21-230, RS 23-160, RS 23-240 RS 24-160 SPICER; J220S, M230T, S190S, W230S
<b>03S00044</b>	<b>03S00267</b>	DANA(EATON); 21060 T/P
<b>03S00044</b>	<b>03S00615</b>	MERITOR(ROCKWELL); RS 23-180
<b>03S00319</b>	<b>03S00320</b>	DANA(EATON); 23080
<b>03S00319</b>	<b>03S00453</b>	DANA(EATON); 23080T

### REAR MOUNTED SHOCK ABSORBERS

CONICAL RH	CONICAL LH	AXLE MODEL
<b>03S00048</b>	<b>03S00049</b>	DANA(EATON); 21060 S/D/A, 23082 MERITOR(ROCKWELL); RS 19-145, RS 21-145, RS 23-160 RS 21-230, RS 23-240, RS 24-160 SPICER; J220S, M230T, S190S
<b>03S00048</b>	<b>03S00208</b>	MERITOR(ROCKWELL); RS 23-180
<b>03S00048</b>	<b>03S00364</b>	DANA(EATON); 21060 T/P
<b>03S00048</b>	<b>03S00656</b>	DANA(EATON); S25-170

CHALMERS 1023 SERIES TORQUE ROD AXLE BRACKETS  
23,000 LBS CAPACITY

BRACKET RH	BRACKET LH	AXLE MODEL
<b>481568</b>	<b>800529</b>	DANA(EATON); 23080
<b>481571</b>	<b>481571</b>	SPICER; J220S, W230S
<b>481571</b>	<b>481574</b>	SPICER; S190S
<b>481574</b>	<b>481574</b>	MERITOR(ROCKWELL); RS 24-160
<b>800527</b>	<b>481567</b>	DANA(EATON); 21060 P/T MERITOR(ROCKWELL); RS 21-160, RS 21-230, RS 23-160 RS 23-180, RS 23-240
<b>800527</b>	<b>800527</b>	DANA(EATON); 21060 S/D/A, 23090S MERITOR(ROCKWELL); RS 19-145, RS 21-145
<b>800527</b>	<b>800530</b>	DANA(EATON); 23082, S23-190, S25-170
<b>800530</b>	<b>481571</b>	SPICER; M230T